



→ Cantilever lift for short overhang

DH-LSP4.10 • 500 - 1000 kg



The DH-LSP4 is equipped with a compact lift frame and **very short lift arms**.

It is ideal for bespoke fitting situations where the standard models DH-LC.07, DH-LM.10 or DH-LMQ.07 / 10 cannot be used. Mostly, this is for commercial vehicles with insufficient overhang behind the mudguard, or behind the spring hangers of the mechanical vehicle suspension.

The 4-cylinder construction guarantees optimal platform stability in longitudinal and lateral direction.

Lift capacity

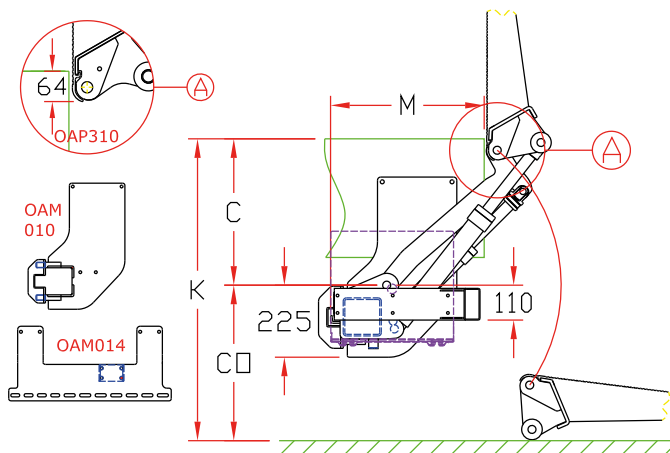
CAP	CG	LM
500 kg	600 mm	3 kNm
750 kg	750 mm	5.6 kNm
1000 kg	750 mm	7.5 kNm

Weights [see pg. 15]

ALU platform	
1250 mm	210 kg
1450 mm	218 kg
1600 mm	224 kg
1800 mm	234 kg

Weights incl. CE bumper

Adapted for very short overhangs



Fitting dimensions

ARM		550
K max.		920
C max.		465
C min.		200
CO max.		455
M	at C max.	480
M	at C min.	660

Technical specifications



Lift frame	120 x 120 mm
Cylinders	2 lift cylinders + 2 tilt cylinders
Type of ride [see pg. 8-9]	Wedged platform. Level ride + automatic tilt at ground level
Platform material	Aluminium
Platform overlap under floor	-64 mm
Standard platform depths	Alu: 1250-1450-1600-1800 mm (max. 2000)
Standard platform widths	Alu: Free up to 2550 in steps of 5 mm
Lift arm lengths	550 mm
Lift arm widths	510 - 1200 - 1450 mm
Standard control unit [see pg. 11]	OAE039.BP
Standard finish of the lift frame	Protection PLUS [OAT102]