



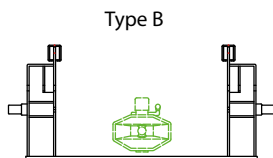
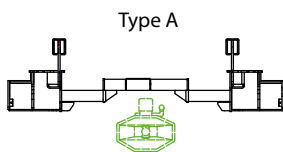
→ Slider lift for trucks with trailer coupling

## DH-SV.20 • 1500 - 2000 kg



The **DH-SV** is designed for **trucks with a central-axle draw bar trailer**. In order to optimize the mounting situation, the DH-SV is **custom made** in function of the specific dimensions of the chassis, the trailer coupling and the draw bar.

Depending on the vehicle dimensions, the DH-SV can be deployed and used without uncoupling the trailer (when type A lift frame can be used, which is in most cases).



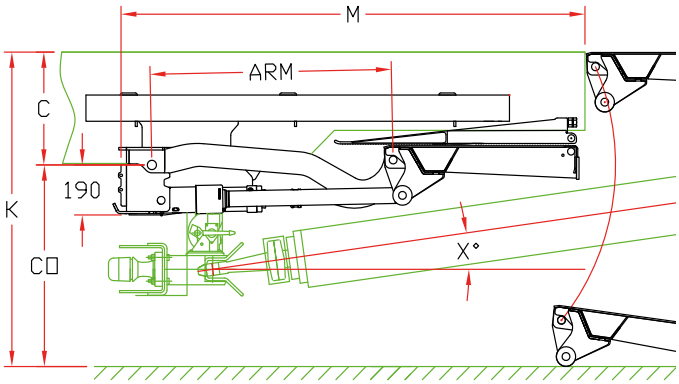
### Lift capacity

CAP	CG	LM
1500 kg	750 mm	11.25 kNm
2000 kg	750 mm	15 kNm

### Weights [see pg. 15]

STEEL / ALU		ALU / ALU	
1500 mm	580 kg	1500 mm	550 kg
1700 mm	600 kg	1700 mm	565 kg

# Designed for trucks with a draw-bar trailer



## Fitting dimensions

ARM		820	880	940	1000
K max.		1360	1460	1560	1660
C max.		650	700	750	800
CO max.		710	760	810	860
M (1) (2)	1500 mm platform	1600	1660	1720	1780
M (1) (2)	1700 mm platform	1700	1760	1820	1880
M (1) (2)	+ option OAP610	-100	-100	-100	-100

(1) In order to create sufficient clearance to the draw bar, the lift might need to be fitted further forward. Consult **DHOLLANDIA** for a detailed study.

(2) Overhang measured to the end of the lift frame. Retraction cylinder between chassis rails not taken into account

## Technical specifications

Lift frame	Custom made around the coupling
Cylinders	2 lift cylinders + 2 tilt cylinders
Retraction IN / OUT	Centrally mounted retraction cylinder
Type of ride [see pg. 8-9]	Wedged platform. Level ride + automatic tilt at ground level
Platform material	Steel / Alu or Alu / Alu
Standard platform depths	1500 - 1700 - 1800 mm Longer platforms on request (OAP602)
Standard platform widths	2300 - 2400 mm Other widths on request (OAP603)
Lift arm lengths	820 - 880 - 940 - 1000 mm
Lift arm widths	1300 - 1450 - 1550 mm
Standard control unit [see pg. 11]	OAE030.BT
Standard finish of the lift frame	Protection PLUS [OAT102]