



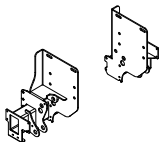
→ Cantilever lift for light commercial vehicles

DH-LMQ.07 / 10 • 500 - 1000 kg

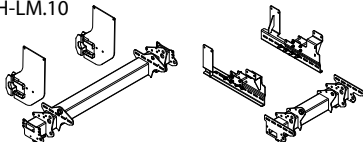


The DH-LMQ.07 (500-750 kg) and DH-LMQ.10 (500-1000 kg) are equipped with premounted mounting plates at a fixed centre distance. This strong 4-cylinder construction without cross tube allows to **save weight** and to leave the **spare wheel in its original position** (in most cases), without compromising on stability.

DH-LMQ



DH-LC.07
DH-LM.10



Lift capacity

CAP	CG	LM
500 kg	600 mm	3 kNm
750 kg	750 mm	5.6 kNm
1000 kg (*)	750 mm	7.5 kNm

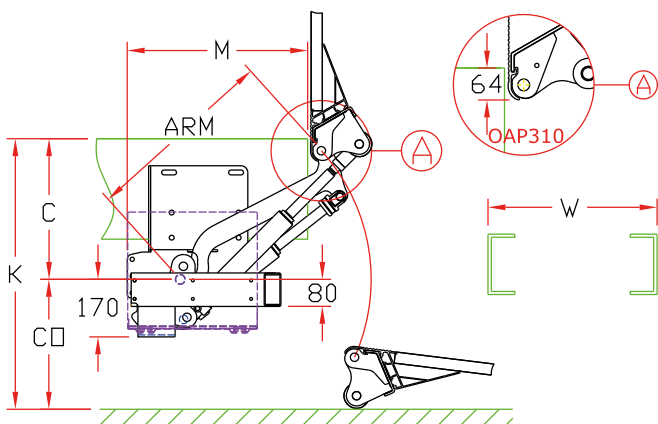
(*) DH-LMQ.10 only

Weights [see pg. 15]

LMQ.07		LMQ.10	
1250 mm	180 kg	1250 mm	195 kg
1450 mm	188 kg	1450 mm	203 kg
1600 mm	194 kg	1600 mm	209 kg

Weights incl. CE bumper

Light-weight 4-cylinder lift for short overhang

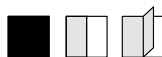


Fitting dimensions

ARM		570	650	750	850 (*)
		LMQ.07		LMQ.10	
K max.		980	1060	1220	1380
C max.		500	530	610	690
C min.		250	300	300	350
CO max.		480	530	610	690
M	at C max.	450	540	600	660
M	at C min.	650	710	815	905

(*) 850 arms optional. Preferably use DH-LM.15. Consult DHOLLANDIA for the optimum solution

Technical specifications



Lift frame	Compact lift frame without cross beam
Cylinders	2 lift cylinders + 2 tilt cylinders
Type of ride [see pg. 8-9]	Wedged platform. Level ride + automatic tilt at ground level
Platform material	Light weight aluminium
Platform overlap under floor	-64 mm
Standard platform depths	LMQ.07: 1250 - 1450 - 1600 max. LMQ.10: 1250 - 1450 - 1600 - 1800 max.
Standard platform widths	Free up to 2550 in steps of 5 mm
Lift arm lengths	LMQ.07: 570 mm LMQ.10: 650 - 750 - 850 mm
Lift arm widths CA	CA=870 W=755 • CA=975 W=860
Standard control unit [see pg. 11]	OAE039.BP
Standard finish of the lift frame	Protection PLUS [OAT102]