



→ Cantilever lift for light commercial vehicles

DH-LC.07 • 500 - 750 kg



The **2-cylinder** DH-LC is at the entry level of DHOLLANDIA's range of cantilever lifts. Thanks to its intrinsic simplicity, its low maintenance cost and its attractive pricing, this compact lift is ideal to equip **rental vehicles** and **light-duty commercial vehicles**.

The DH-LC is available with universal bolt-on mounting plates to suit regular truck chassis, or with brand-specific quick-fit mounting plates (depending on chassis type, wheel base and overhang). It suits most commercial vans and light-duty trucks up to 7.5T GVW, as well as small trailers and semi-trailers.

Lift capacity

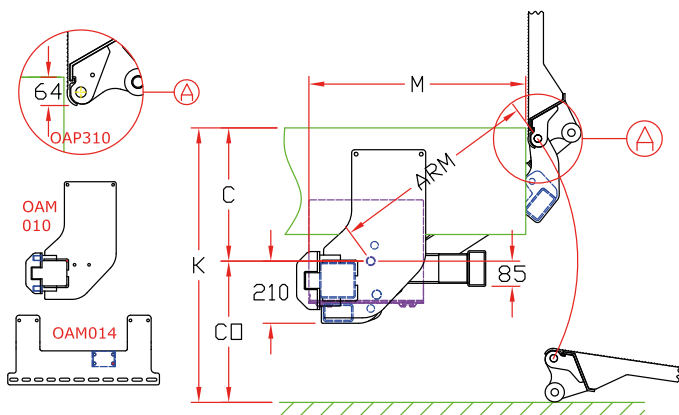
CAP	CG	LM
500 kg	600 mm	3 kNm
750 kg	600 mm	4.5 kNm

Weights [see pg. 15]

ALU platform	
1250 mm	199 kg
1450 mm	207 kg
1600 mm	213 kg

Weights incl. CE bumper

Compact, basic 2-cylinder lift



Fitting dimensions

ARM		700	850
K max.		1090	1310
C max.		520	620
C min.		300	300
CO max.		570	670
M	at C max.	675	785
M	at C min.	820	975

Technical specifications



Lift frame	120 x 120 mm
Cylinders	1 lift cylinder + 1 tilt cylinder
Type of ride [see pg. 8-9]	Wedged platform. Level ride + automatic tilt at ground level
Platform material	Light-weight aluminium
Platform overlap under floor	-64 mm
Standard platform depths	1250 - 1450 - 1600 mm (max. 1800)
Standard platform widths	Free up to 2200 in steps of 5 mm
Lift arm lengths	700 - 850 mm
Lift arm widths	620 mm
Standard control unit [see pg. 11]	OAE039.BP
Standard finish of the lift frame	KTL [OAT100]