



→ Cantilever lift for light commercial vehicles

DH-LE.10 • 500 - 1000 kg



The new DH-LE is a **light-weight 2-cylinder lift**, at the entry level of DHOLLANDIA's range of cantilever lifts. Thanks to its compact lift frame and short lift arms, it ideally suits light commercial vehicles with **very short overhang**.

The ingenious lift frame construction without cross tube allows to **save weight** and (in most cases) to **leave the spare wheel in its original position**.

The DH-LE is available with a conventional lift frame to suit regular chassis, or with brand-specific quick-fit mounting plates (depending on chassis type, wheel base and overhang).

Lift capacity

CAP	CG	LM
500 kg	600 mm	3 kNm
750 kg	600 mm	4.5 kNm
1000 kg	600 mm	6 kNm

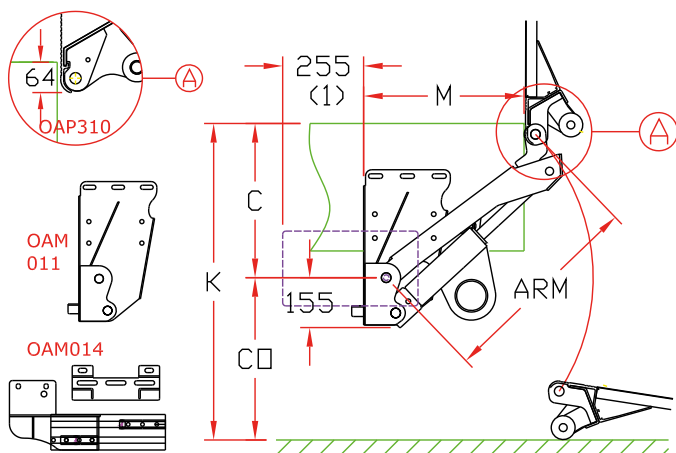
Remark: this lift is not distributed in Belgium, Germany and Sweden.

Weights [see pg. 15]

ALU platform	
1250 mm	183 kg
1450 mm	191 kg
1600 mm	197 kg
1800 mm	207 kg

Weights incl. CE bumper

Modern 2-cylinder lift for very short overhang

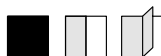


Fitting dimensions

ARM		570	650
K max.		1030	1180
C max.		480	580
C min.		300	350
CO max.		550	600
M	at C max.	370	330
M	at C min.	540	600

(1) Standard supply with horizontally positioned pump unit. Tail lift is available with vertically mounted or separate pump unit if overhang needs to be reduced further. Consult DHOLLANDIA for optimum solution.

Technical specifications



Lift frame	Compact lift frame without cross beam
Cylinders	1 lift cylinder + 1 tilt cylinder
Type of ride [see pg. 8-9]	Wedged platform. Level ride + automatic tilt at ground level
Platform material	Light-weight aluminium
Platform overlap under floor	-64 mm
Standard platform depths	1250 - 1450 - 1600 mm (max. 1800)
Standard platform widths	Free up to 2550 in steps of 5 mm
Lift arm lengths	570 - 650 mm
Lift arm widths	Adapted to the chassis width
Standard control unit [see pg. 11]	OAE030.BT
Standard finish of the lift frame	Protection PLUS [OAT102]